

GAB2 Antibody (N-term)
Affinity Purified Rabbit Polyclonal Antibody (Pab)
Catalog # AP6908A**Specification**

GAB2 Antibody (N-term) - Product Information

Application	FC, WB,E
Primary Accession	O9UQC2
Other Accession	O9EQH1 , O9Z1S8
Reactivity	Human
Predicted	Mouse, Rat
Host	Rabbit
Clonality	Polyclonal
Isotype	Rabbit IgG
Antigen Region	3-30

GAB2 Antibody (N-term) - Additional Information**Gene ID** 9846**Other Names**

GRB2-associated-binding protein 2, GRB2-associated binder 2, Growth factor receptor bound protein 2-associated protein 2, pp100, GAB2, KIAA0571

Target/Specificity

This GAB2 antibody is generated from rabbits immunized with a KLH conjugated synthetic peptide between 3-30 amino acids from the N-terminal region of human GAB2.

Dilution

FC~~1:10~50

WB~~1:1000

E~~Use at an assay dependent concentration.

Format

Purified polyclonal antibody supplied in PBS with 0.09% (W/V) sodium azide. This antibody is purified through a protein A column, followed by peptide affinity purification.

Storage

Maintain refrigerated at 2-8°C for up to 2 weeks. For long term storage store at -20°C in small aliquots to prevent freeze-thaw cycles.

Precautions

GAB2 Antibody (N-term) is for research use only and not for use in diagnostic or therapeutic procedures.

GAB2 Antibody (N-term) - Protein Information**Name** GAB2

Synonyms KIAA0571

Function Adapter protein which acts downstream of several membrane receptors including cytokine, antigen, hormone, cell matrix and growth factor receptors to regulate multiple signaling pathways. Regulates osteoclast differentiation mediating the TNFRSF11A/RANK signaling. In allergic response, it plays a role in mast cells activation and degranulation through PI-3-kinase regulation. Also involved in the regulation of cell proliferation and hematopoiesis.

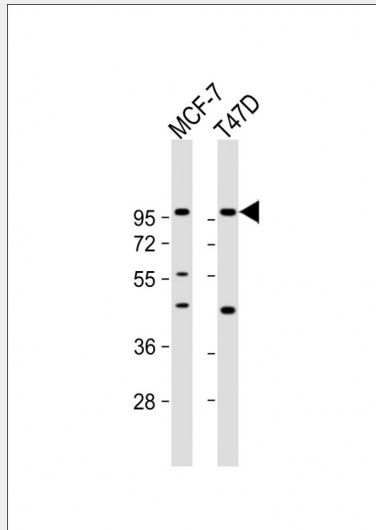
Cellular Location

Cytoplasm. Cell membrane. Membrane raft {ECO:0000250|UniProtKB:Q9Z1S8}

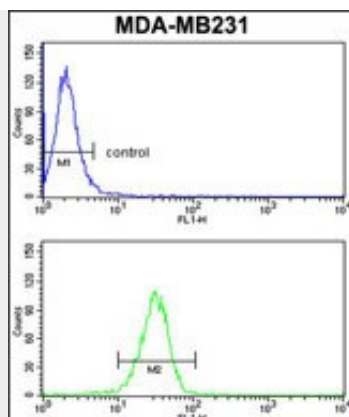
GAB2 Antibody (N-term) - Protocols

Provided below are standard protocols that you may find useful for product applications.

- [Western Blot](#)
- [Blocking Peptides](#)
- [Dot Blot](#)
- [Immunohistochemistry](#)
- [Immunofluorescence](#)
- [Immunoprecipitation](#)
- [Flow Cytometry](#)
- [Cell Culture](#)

GAB2 Antibody (N-term) - Images

All lanes : Anti-GAB2 Antibody (N-term) at 1:1000 dilution Lane 1: MCF-7 whole cell lysate Lane 2: T47D whole cell lysate Lysates/proteins at 20 µg per lane. Secondary Goat Anti-Rabbit IgG, (H+L), Peroxidase conjugated at 1/10000 dilution. Predicted band size : 74 kDa Blocking/Dilution buffer: 5% NFDM/TBST.



GAB2 Antibody (N-term) (Cat.#AP6908a) flow cytometry analysis of MDA-MB231 cells (bottom histogram) compared to a negative control cell (top histogram). FITC-conjugated goat-anti-rabbit secondary antibodies were used for the analysis.

GAB2 Antibody (N-term) - Background

GAB2 is the principal activator of phosphatidylinositol-3 kinase in response to activation of the high affinity IgE receptor.

GAB2 Antibody (N-term) - References

Yamasaki,S., et.al., J. Biol. Chem. 276 (48), 45175-45183 (2001)

GAB2 Antibody (N-term) - Citations

- [In vivo multiplexed interrogation of amplified genes identifies GAB2 as an ovarian cancer oncogene.](#)